

Engaging with technology providers and private satellite companies to accelerate Earth observation uptake

Sara Venturini, GEO Secretariat

Natalia Bermudez, NASA SERVIR



promoting PPPs



- We promote collaborations between public and private satellite data providers and governments to enhance Earth observation data collection and access
- We bring together world leading cloud service and geospatial players to help low- and middle-income countries with free licences and grants
- As we complete two decades of GEO, Public—Private Partnerships figure more and more

GO collaborations



2019

2020

2021

17 COUNTRIES

32 COUNTRIES

18 COUNTRIES

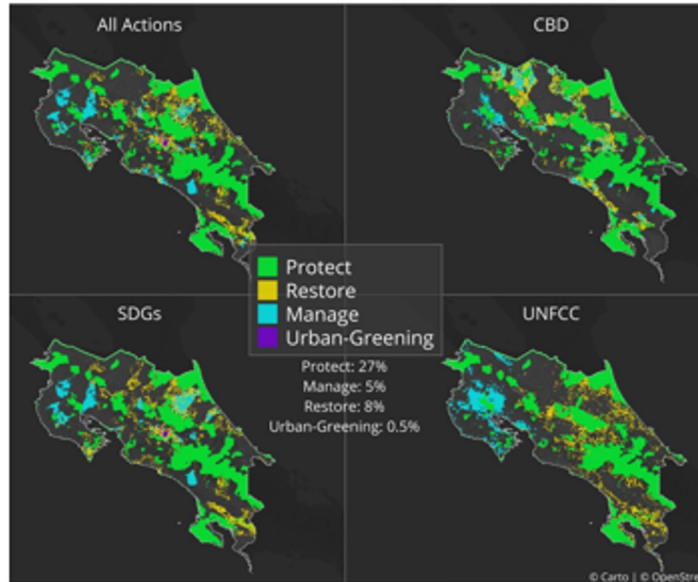
**\$1.5m
+ \$1m cap dev**

**\$3m
+ \$1.5m cap dev**

**\$3m (50% cash)
+\$1m cap dev**

Costa Rica

Mapping Essential Life Support Areas



MINISTRY OF ENVIRONMENT
AND ENERGY OF COSTA RICA
THE 2020 GEO SUSTAINABLE
DEVELOPMENT GOALS AWARD
for
GEO Member



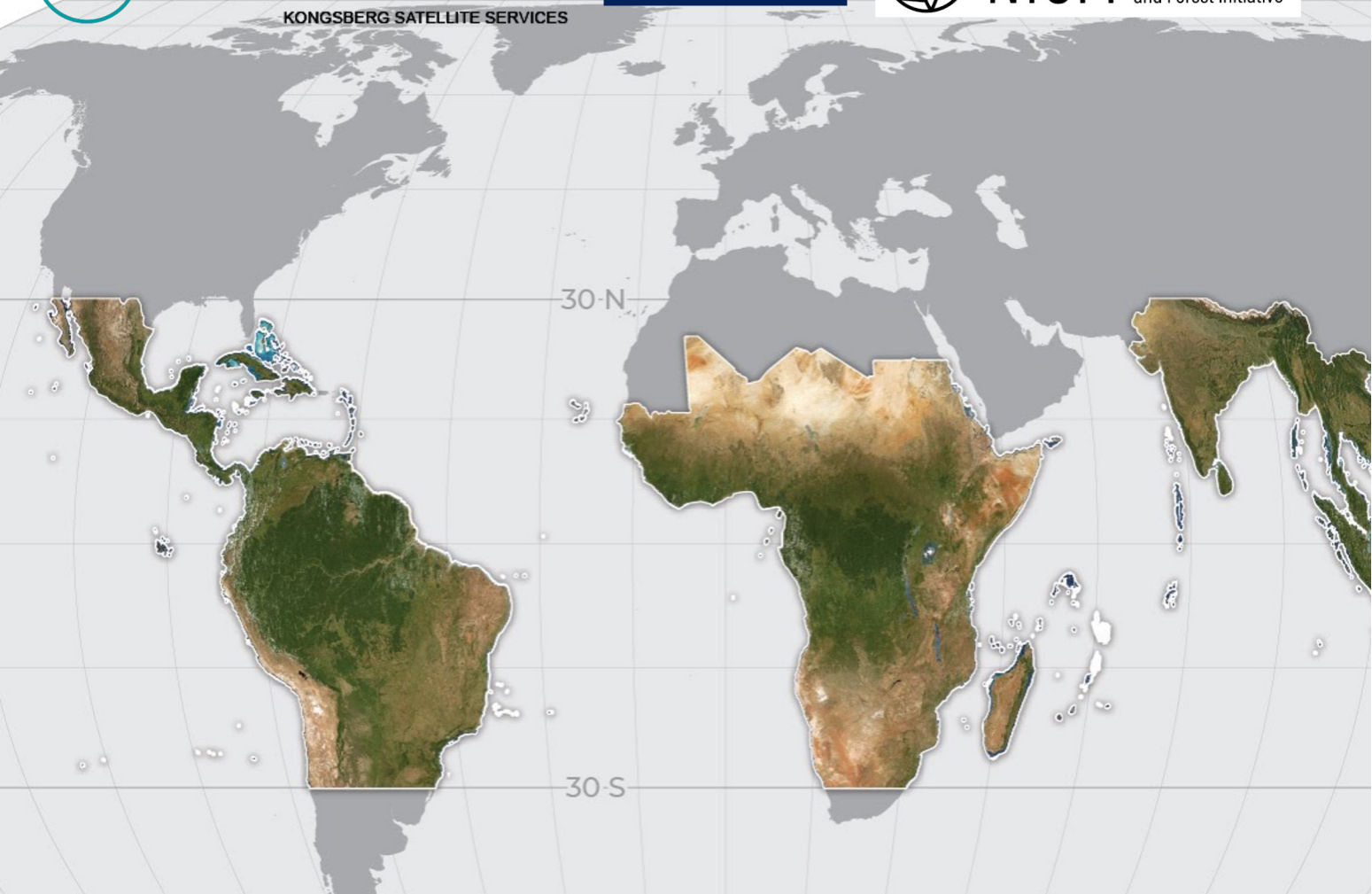
INAMHI GEOGLoWS Portal Log In

Filter by tag

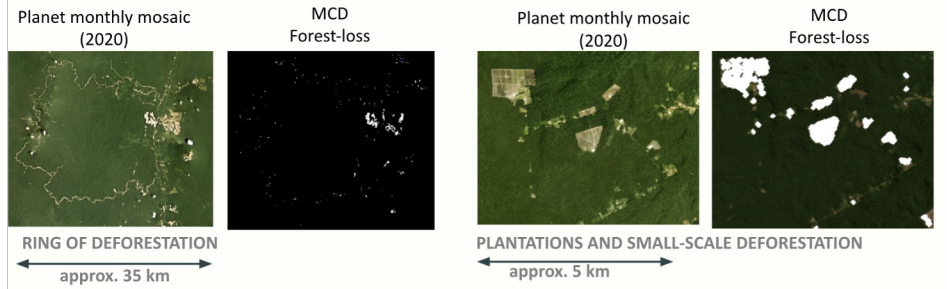
- ECUADOR 🇪🇨
Climate Trends
- ECUADOR 🇪🇨
GEOGLoWS Hydroviewer
- ECUADOR 🇪🇨
Grace Groundwater Subsetting Tool
- ECUADOR 🇪🇨
Historical Validation Tool Ecuador

Ecuador





NICFI SATELLITE DATA PROGRAM



**Free high-resolution satellite data
to monitor deforestation**

Opportunities for accessing commercial satellite data

- NASA-Planet partnership: NASA-affiliated researchers - and more broadly researchers funded by the U.S. Government - have access to data from Planet via the [Commercial Smallsat Data Acquisition \(CSDA\) Program](#).



International Journal of Applied Earth
Observation and Geoinformation

Volume 93, December 2020, 102218



Evaluating the performance of high-resolution satellite imagery in detecting ephemeral water bodies over West Africa

Vikalp Mishra^{a, b}, Ashutosh S. Limaye^b, Rebekke E. Muench^{a, b},
Emil A. Cherrington^{a, b}, Kel N. Markert^{a, b}

- Additionally, faculty, staff, and students of universities the world over can avail themselves of access to Planet's [Education and Research Program](#), which grants free access to a monthly quota of up to 5,000 km² of archived imagery per month.



Thesis Research

Harness an unprecedented daily dataset



GIS Courses

Pull the cutting edge into your classroom

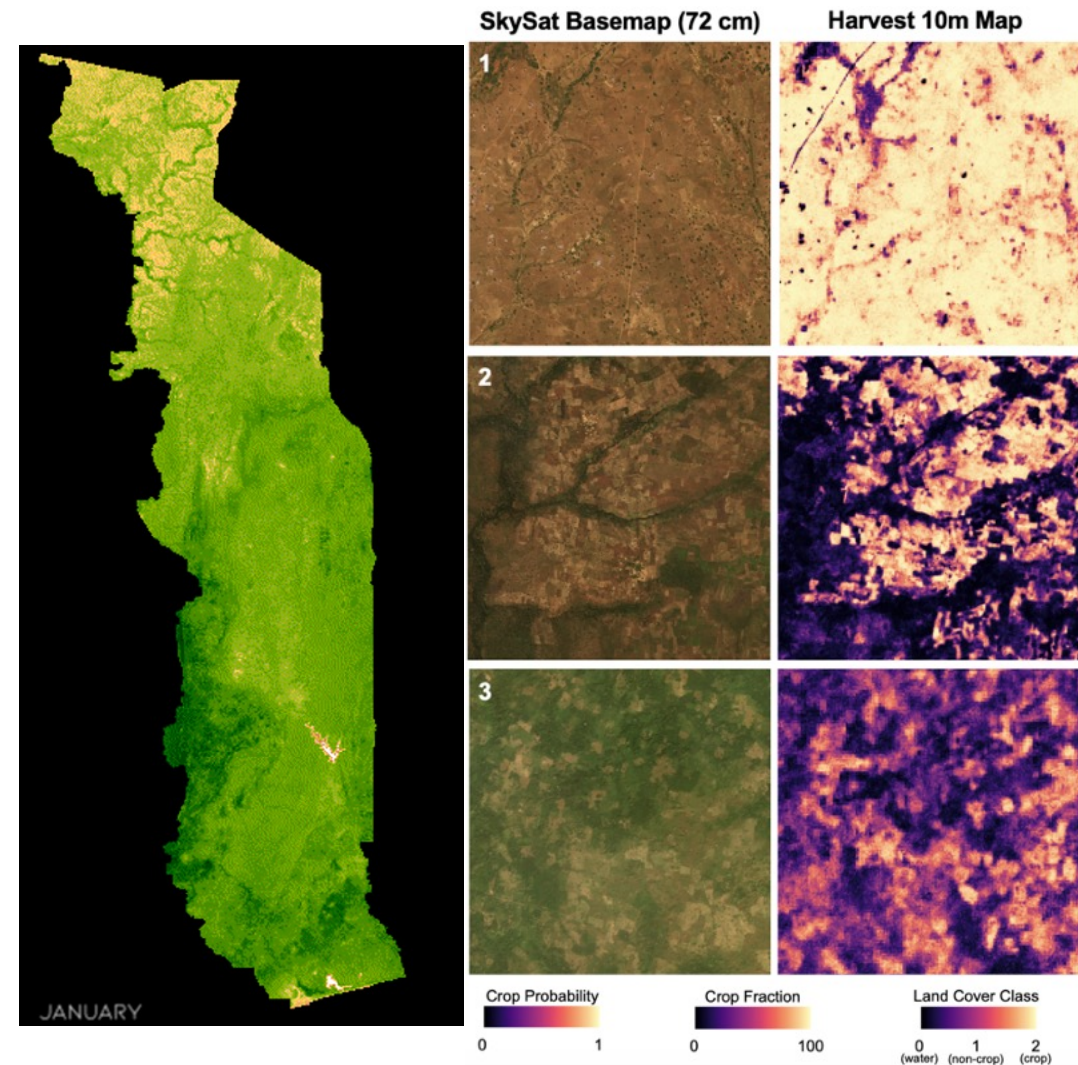


Data Fusion

Combine Planet imagery with other data for added insights

Rapid response to ripple effects of COVID-19: Food Security in Togo

- COVID-19 shutdowns in Togo constrained agricultural production by small farmers. The Togolese government needed a precise country-wide cropland map to develop a loan programme that would help fund the cost of farming essentials.
- In the past, farmers eligible for such loans would have been identified using Togo’s census data but the existing census underestimates informal smallholders who rely on subsistence farming.
- With Planet’s high-resolution SkySat imagery, the NASA Harvest team developed a cropland map for Togo within 10 days. Satellite data filled the census data gaps and enabled the loan distribution to reach all smallholder farmers.

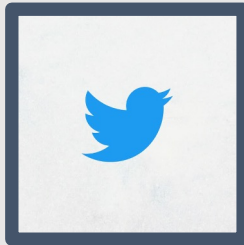


Average NDVI anomaly in Togo (left), Planet and new NASA Harvest-generated Togo crop maps (right)

Contacts



sventurini@geosec.org
nab0039@uah.edu



#NAPExpo #EO4Impact
@GEOSEC2025
@la_Venturini
@Natalia21058264



NAPEXPO
CHILE 2023

